

# ACUMEN TECHNOLOGIES, INC.

## SERIES 2000 CHAIN LUBRICATION SYSTEM

ACUMEN TECHNOLOGIES' State-of-the-art SERIES 2000 Chain Lubrication System dispenses lubricant to chains in a continuous pinpoint flow. This allows lubrication of the chain in any application without overspray or oil contamination of your product or environment. No mist or atomized fluid exists inside the nozzle. Our nozzle uses **Thin Film Technology** to deliver consistent oil to the tip.

### FEATURES

- External Oil Reservoir provides visual fluid level indication
- NEMA12 electrical housing
- Expandable housing will handle any nozzle quantity required to reach all lube points with a single system
- Powder Coat Baked Paint Finish
- Multiple Regulators Available to Balance Tubing Run Distances
- Easily Serviced, External High Capacity Filter
- Low Oil - Low Air Pressure Switches Standard
- Capable of spraying different chains, both continuous and pulse spray with a single system



### DRAMATICALLY REDUCE OIL CONSUMPTION

Delivers oil in a pinpoint spray in volumes as little as .005ml per minute to as much as 4.8ml per minute. Accurate delivery of small quantities of fluid eliminates the problem of product contamination.

### ADVANTAGES

- **Extended Chain Life:** Proper delivery of lubricant to the sliding and rolling elements of the chain provides extended life of the chain pins, links, sliding wear surfaces, and bearings.
- **Power Savings:** Proper lubrication of the chain sliding surfaces and rolling wheel components reduces friction. This reduction in friction will result in a power savings by a decrease in amperage draw of the drive motor.
- **Consistent Delivery:** No puddling of oil on the chain or product as with conventional drip or brush lubricators.
- **Reduced oil consumption:** By applying the lubricant in small controlled quantities, where it's needed, when it's needed, oil reductions of 50% to 90% are achieved over conventional chain lubrication systems.
- **Precise Volume Control:** Positive displacement pump with adjustable or nonadjustable metering pin injects precise amount of lubricant to the nozzle.
- **Accurate Delivery:** Strategically positioned nozzles (no bent tubes) direct lubricant to the wear points with no overspray.

# SPECIFICATIONS

**Electrical:**

NEMA 12/13 Enclosure  
 110/120 VAC 50/60 Hz  
 24 VDC

**Pneumatic:**

Inlet: 3/8 NPT to be supplied with 3/8" pipe or 1/2" steel tubing  
 Pressure: 60PSIG min / 120PSIG max  
 Filter: High Capacity 5 Micron

**Oil Reservoir:**

2000ml Standard with Central Fill Adapter  
 1,5,10,30 Gallon Available  
 Low Reservoir Level Float Switch  
 Max switching power 70VA  
 Switch contact: SPST NO  
 Voltage: 120 VAC or 24 VDC

**Fluids Delivered:**

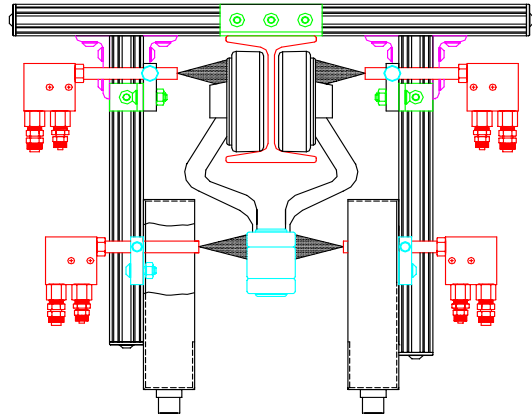
Oil and similar fluids 70 SSU - 3000 SSU

**Nozzles:**

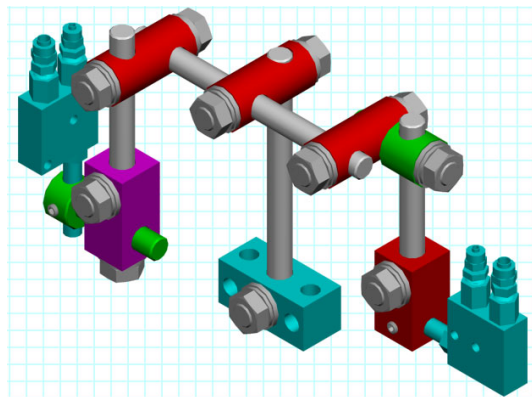
Acumen nozzles are available for a wide variety of spray patterns:  
 Pin Point  
 360 degree  
 Cone Spray  
 Flat Spray  
 Special Application Nozzles

**Injector Pump Displacements:**

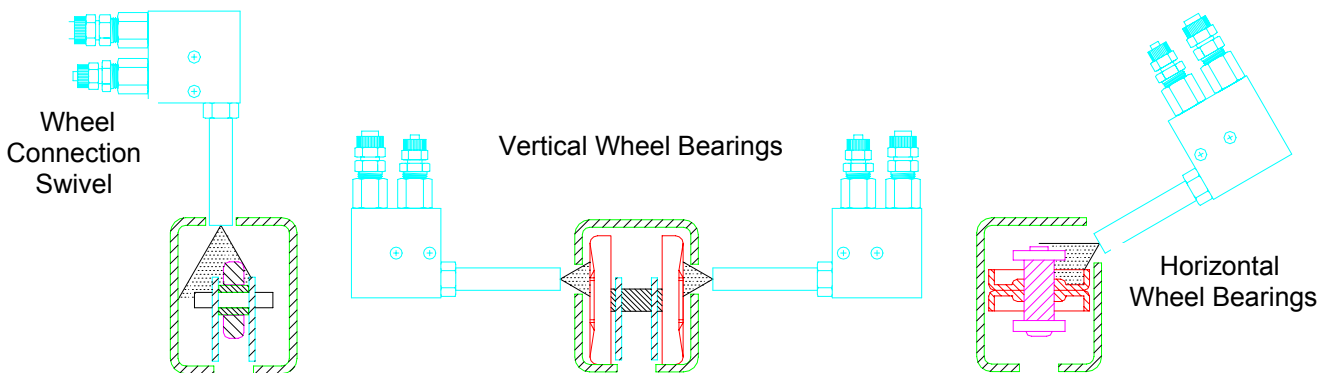
0.015ml (1/2 Drop)  
 0.030ml (1 drop)  
 0.060ml (2 Drop)



**Four Nozzle - Two Continuous / Two Intermittent Spray**



**Modular Aluminum Bracket System**



**Overhead Power Chain Conveyor - Enclosed Track  
 Four Nozzle Continuous Spray**

**DISTRIBUTED BY:**